

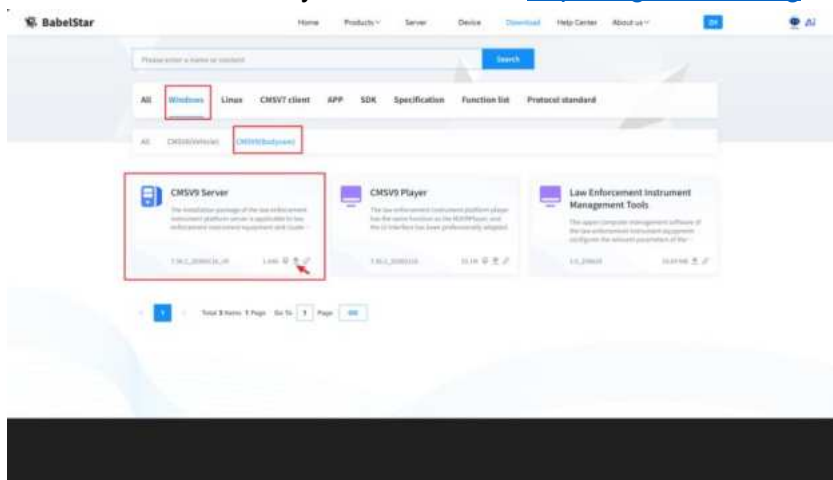
# SGCCTV Body Worn Camera 4G CMS Software Installation Guide

## CMSV9 Deployment Guide

### 1. Obtaining the CMSV9 Installation Package

The CMSV9 installation package can be obtained in the following ways:

- Directly from SGCCTV CHOICECYCLE
- Or download it yourself from the <https://sgcctv.com.sg>



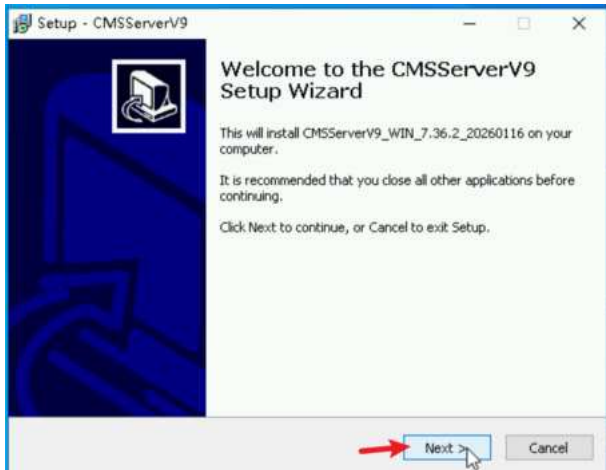
### 2. Running the Installation Package

*Installation tip: For first-time installation, select the default configuration; settings can be adjusted later as needed.*

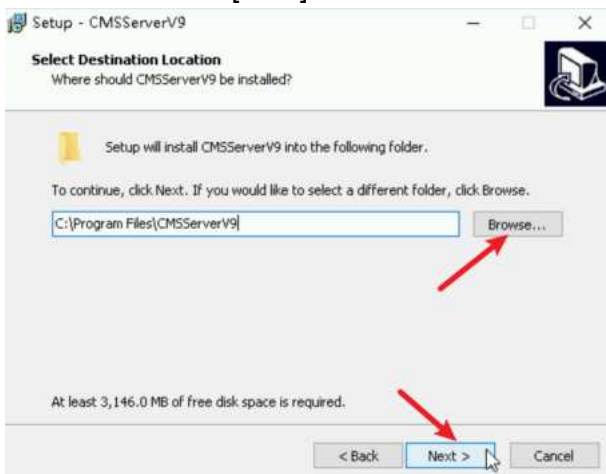
- 2a. Select language:** After launching the installer, select the desired language (e.g. Chinese / English) from the dropdown in the popup window, then click [OK] to proceed.



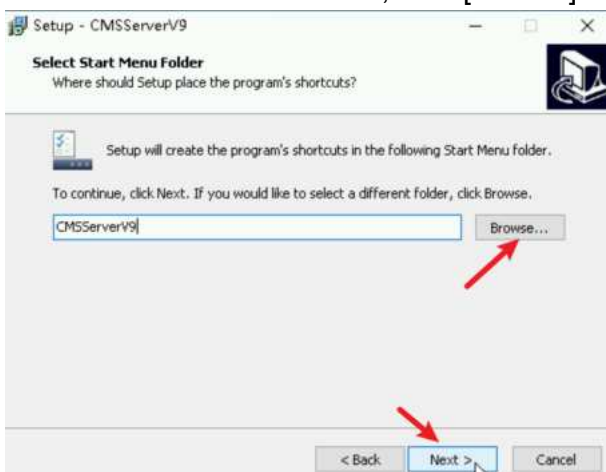
- 2b. Welcome screen:** Click [Next] to enter the welcome page.



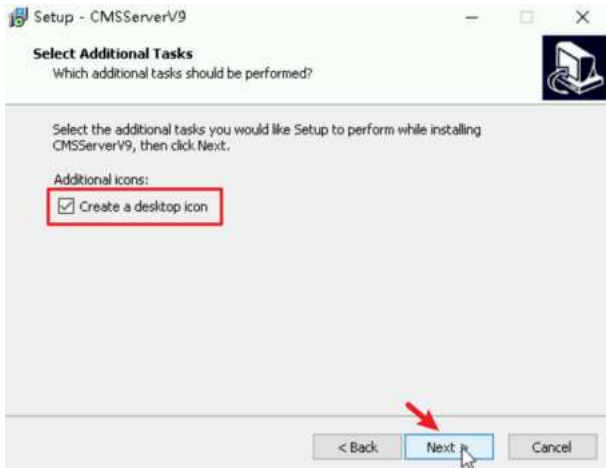
**2c. Select installation path:** Click [Browse] to specify a custom installation directory, then click [Next].



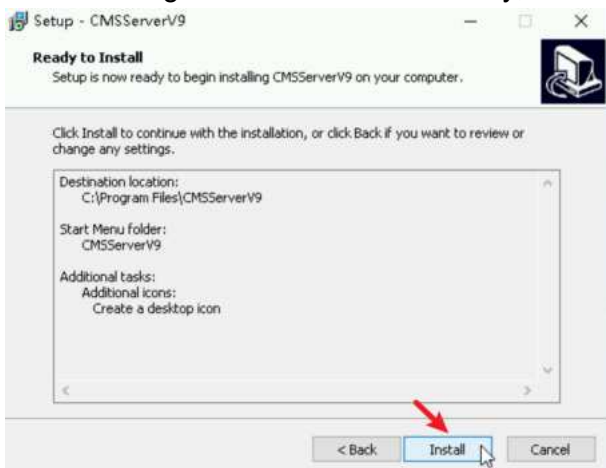
**2d. Set Start Menu shortcut folder:** Choose the folder in the [Start Menu] where CMSV9 will be stored; click [Browse] to change it, then click [Next].



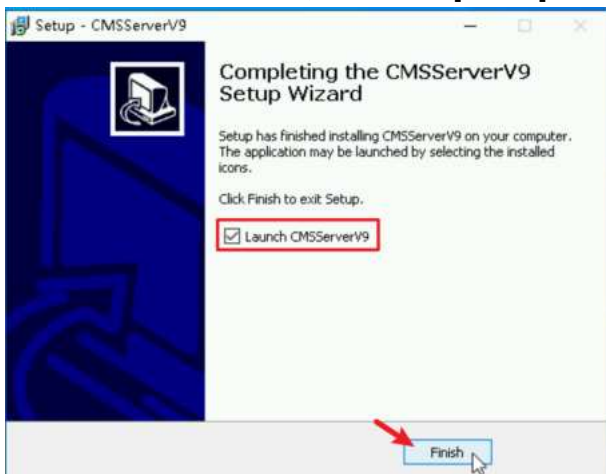
**2e. Create desktop shortcut:** If you want to create a desktop shortcut, check the corresponding option, then click [Next].



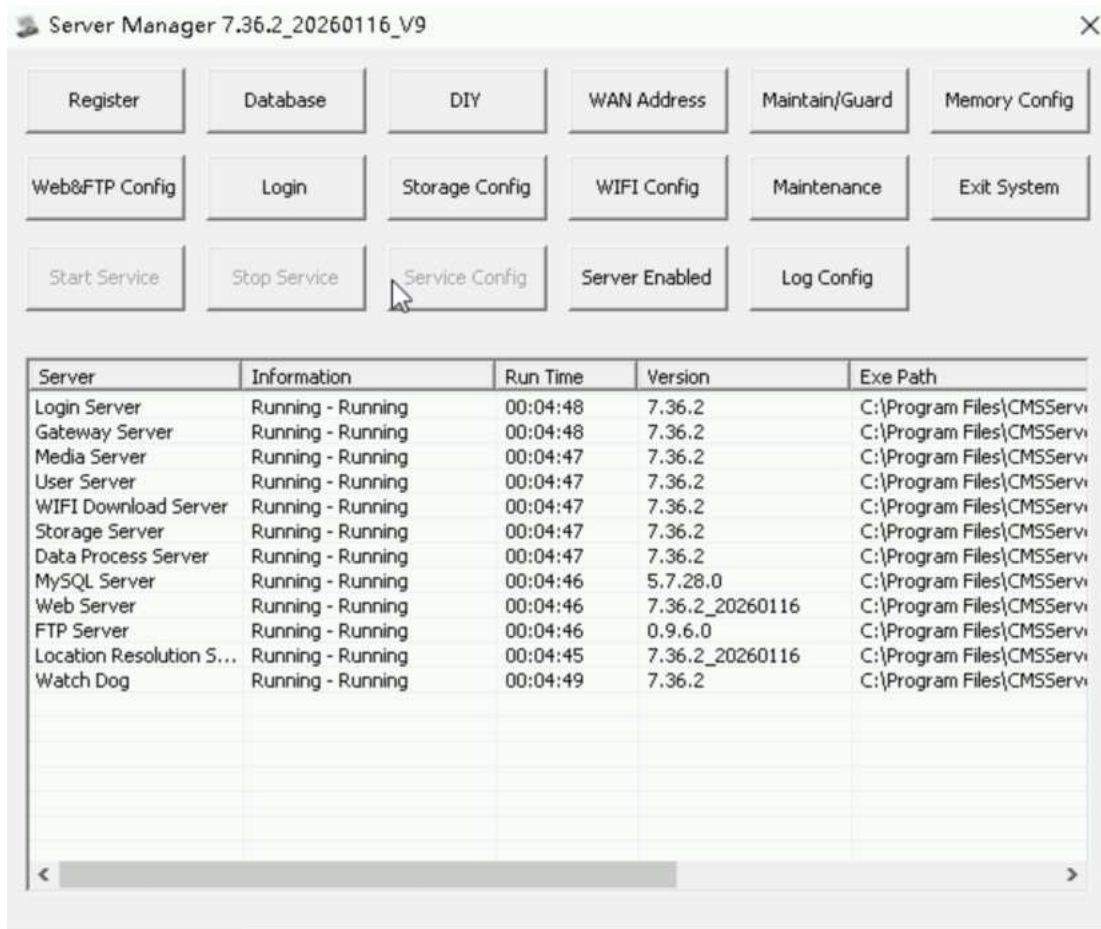
**2f. Confirm installation information:** The system will display the current installation configuration — review carefully, then click [Next].



**2g. Launch CMSV9 (optional):** Check whether to automatically launch the program after installation, then click [Finish] to complete the installation.



**2h. Service status verification:** After installation, run the CMSV9 main program and wait for system initialization until all services display "Running Normally" — this indicates successful installation.



### 3. Parameter Configuration (Web Interface)

After installation, access the Web management interface via a browser to configure parameters, including automatically obtaining and configuring the server IP.

#### Login Information

##### Login page URL (local access — recommended):

<http://127.0.0.1:8080/808gps/login.html>

##### Public network access (example URL):

<http://47.243.253.192:8080/808gps/login.html>

Format: *http://<YOUR\_SERVER\_IP>:<PORT>/808gps/login.html*

Default administrator account:

**Username:** admin

**Password:** sgccctv

✓ If using a public IP, ensure the server port (e.g. 8080) is open in your firewall and router.



## Configuration Procedure

Open a browser and enter the login URL above; log in using the administrator account. After successful login, click [Server] in the menu bar to access the Server Management interface.

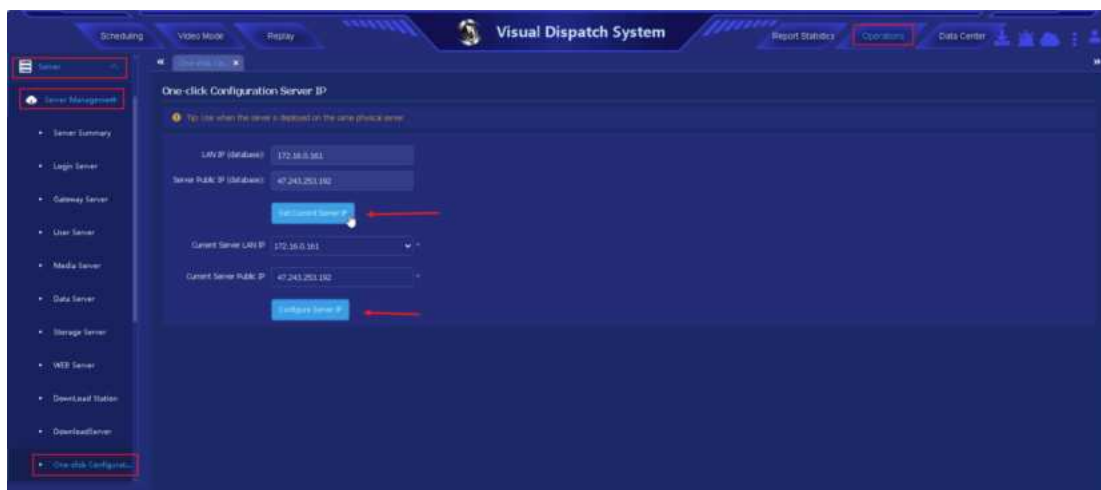
In the left navigation bar, click in sequence:

[Server] → [Server Management] → [One-Click Configure Server IP]

Click the [Get Current Server IP] button — the system will automatically retrieve the local LAN IP and public IP (if configured).

Click [Configure Server IP] — the system will automatically set the listening IP and related service ports based on the default configuration.

✓ *One-click configuration is suitable for most standard deployment scenarios. If you have special requirements (e.g. custom ports, NAT mapping), please contact technical support or refer to the advanced manual.*



# CMSV6 Installation Guide

## 1. Obtaining the CMSV6 Installation Package

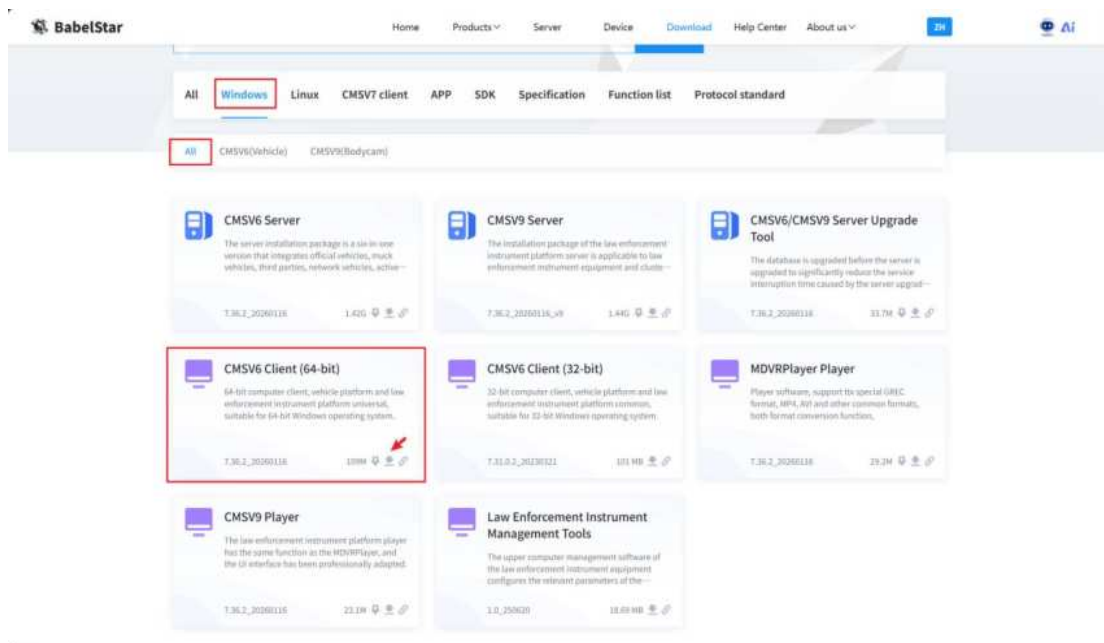
The CMSV6 installation package can be obtained in the following ways:

- Directly from SGCCTV CHOICECYCLE
- Or download it yourself from the official download URL <https://sgcctv.com.sg>

**Version Selection:** Please select the version that matches your operating system's bit version.

Operating System Type	Please Select to Download
64-bit Windows	CMSV6 Client (64-bit)
32-bit Windows	CMSV6 Client (32-bit)

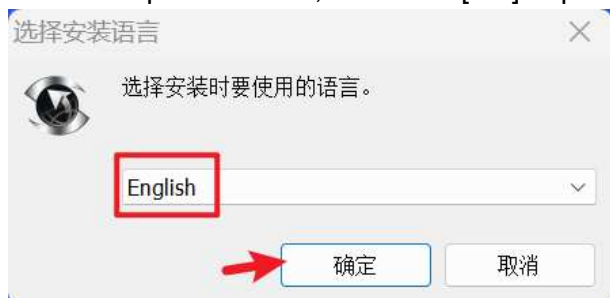
Please choose the corresponding version based on your PC's operating system type to avoid compatibility issues.



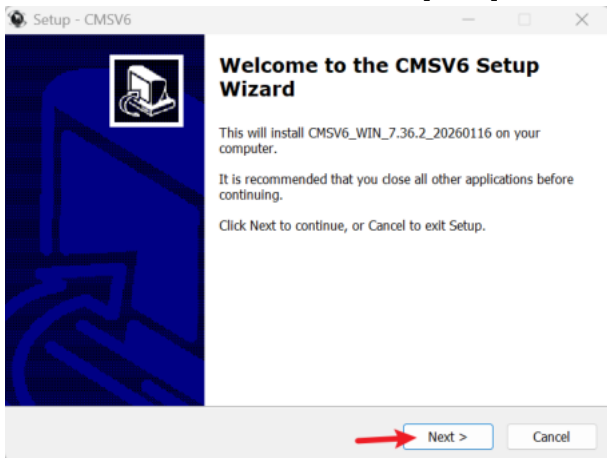
## 2. Installation Steps

*Installation recommendation: For first-time installation, it is recommended to keep the default settings; configuration items can be manually adjusted later as needed.*

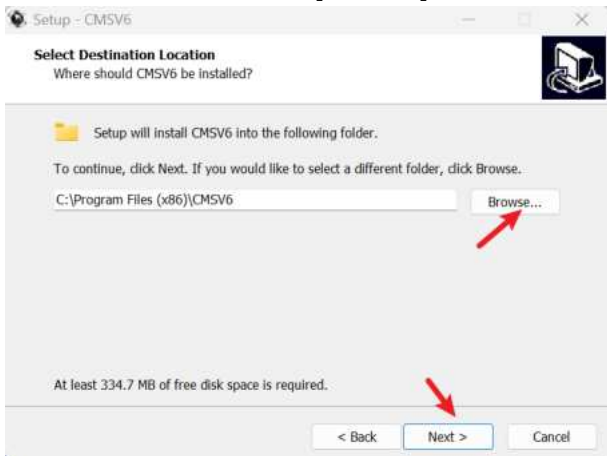
- **Select language:** After launching the installer, select the desired language from the dropdown menu, then click [OK] to proceed.



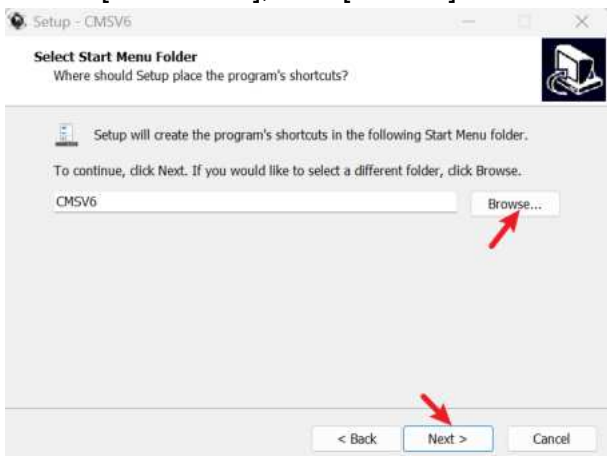
- **Welcome screen:** Click [Next] to enter the welcome page.



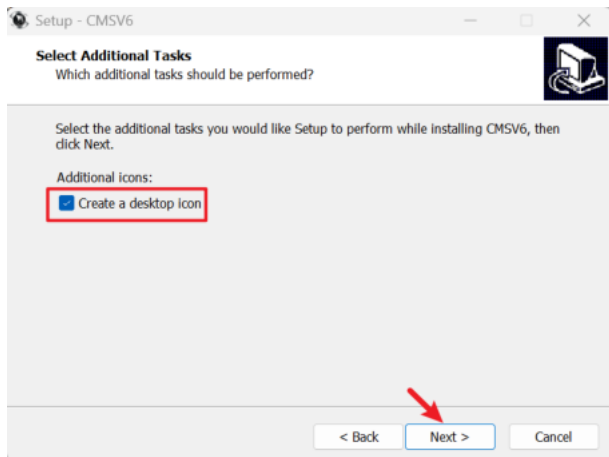
- **Set installation path:** The default path is usually C:\Program Files\CMSV6. To customize, click [Browse] to select the target directory, then click [Next].



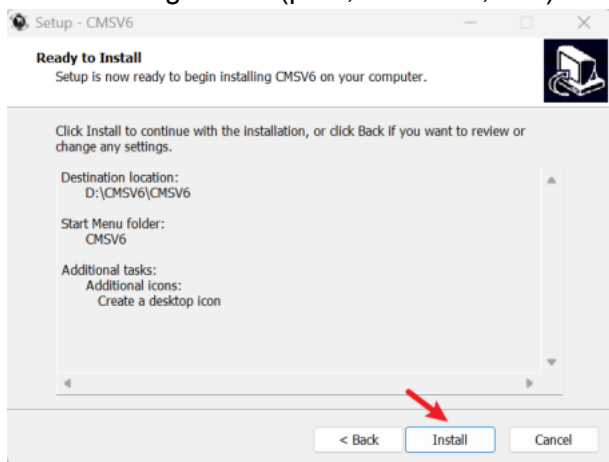
- **Set Start Menu shortcut folder:** Choose the storage location for CMSV6 in the [Start Menu]; click [Browse] to customize, then click [Next].



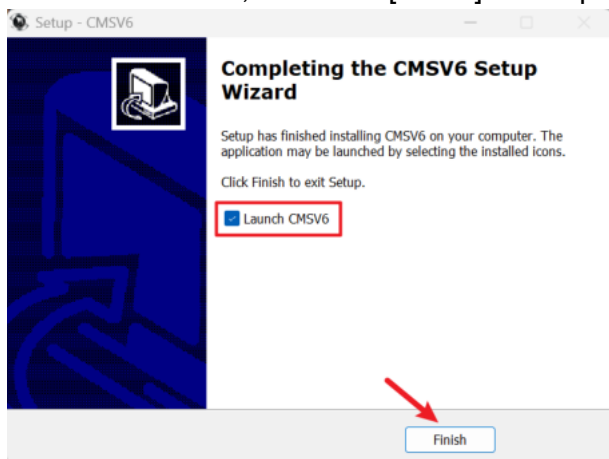
- **Create desktop shortcut (optional):** Check whether to create a desktop shortcut, then click [Next].



- **Confirm installation information:** The system displays the current selected configuration (path, shortcuts, etc.) — review carefully, then click [Next].



- **Launch program (optional):** Check whether to automatically launch CMSV6 after installation, then click [Finish] to complete.



- **Verify installation:** Launch the CMSV6 program — when the login screen appears, installation is confirmed successful.

The image shows a login interface with a blue background featuring a network diagram. At the top right, there are window control icons: a gear for settings, a minus sign for minimize, and an 'X' for close. The form consists of the following elements:

- A username field containing the text "admin" with a user icon on the left and a search icon on the right.
- A password field represented by a series of black dots, with a lock icon on the left.
- An IP address field containing "47.243.253.192" with a server icon on the left and a dropdown arrow on the right.
- Two checkboxes: "Remember Password" (checked) and "Login Automatically" (unchecked).
- A white "Login" button centered at the bottom of the form.